

SR OIL-LESS ROTARY

Air Compressors and Vacuum Pumps

1/10 & 1/6 HP

MODELS:

Standard models available.

SR-0015-VP (291275), SR-0015-VP (291293)

SR-0030 (291290), SR-0030 (291294)

Other models based on availability and minimum purchase.

FEATURES:

- Oil-less operation
- Cast iron pump housing
- Self-lubricating, self-adjusting vanes
- Permanently lubricated and sealed motor bearing
- Long, service-free life
- Fifty-micron inlet and outlet filter assemblies (SR-0015 models only)
- CE approval on all standard 220-240/50hz models (Consult factory for non-standard models)

Consult factory for custom applications

DIMENSIONS:

Millimeters are in ()



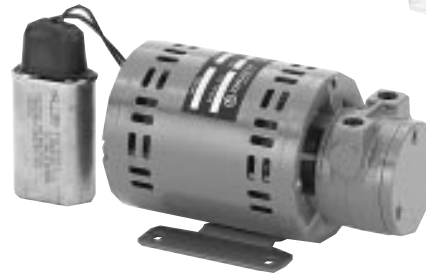
291289



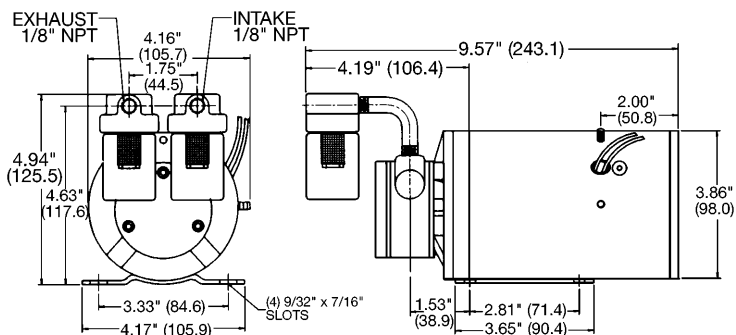
291275
291293



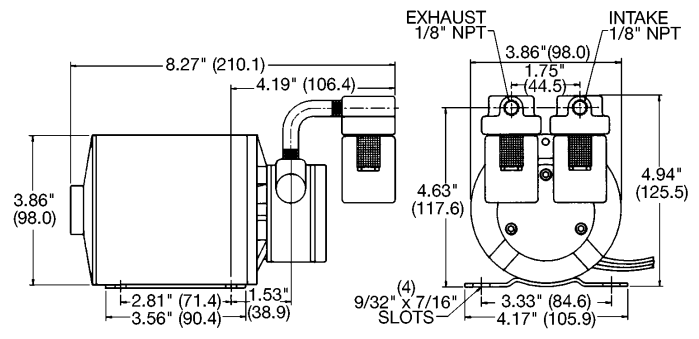
291277



291287
291290
291294

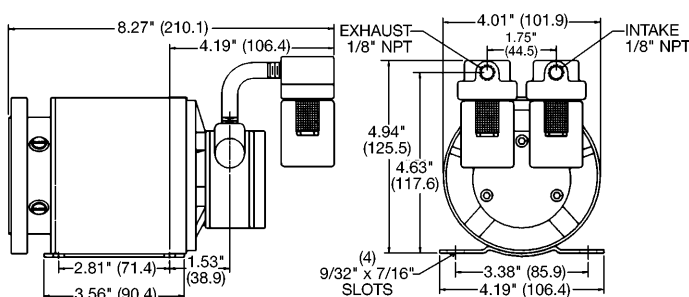


291277

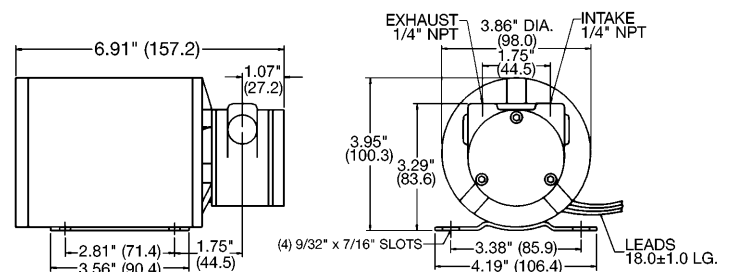


291275
291293

SR-0015-VP W/FILTERS PSC



291289

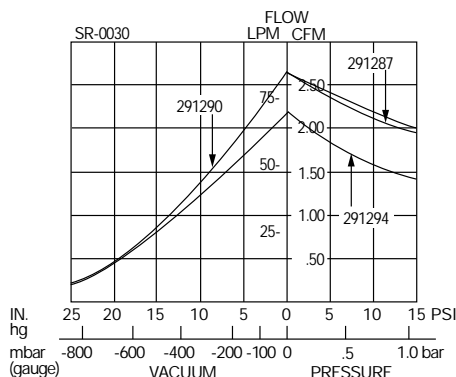
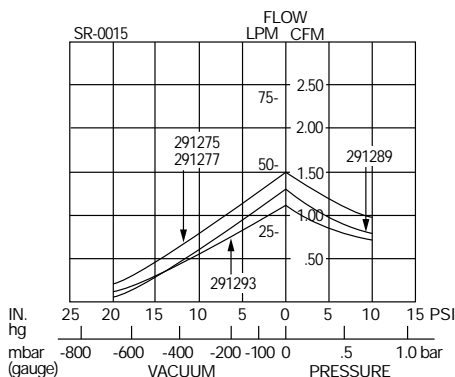


291287
291290
291294

THOMAS
COMPRESSORS
& VACUUM PUMPS
First Name in Innovation

SR OIL-LESS ROTARY PERFORMANCE DATA:

| | | | | STANDARD | | STANDARD | | | | | | STANDARD | | STANDARD | |
|--|-------------------|---------------------|-----------|---------------------|-----------|---------------------|-----------|---------------------|-----------|---------------------|-----------|---------------------|-----------|---------------------|-----------|
| MODEL NUMBER: | | SR-0015 w/filters | | SR-0015-VP | | SR-0015-VP | | SR-0015-VP | | SR-0030 | | SR-0030 | | SR-0030 | |
| MANUFACTURING CODE: | | 291289 | | 291275 | | 291293 | | 291277 | | 291287 | | 291290 | | 291294 | |
| HEAD CONFIGURATION: | | Pressure/ Vacuum | | Pressure/ Vacuum | | Pressure/ Vacuum | | Pressure/ Vacuum | | Pressure/ Vacuum | | Pressure/ Vacuum | | Pressure/ Vacuum | |
| PRESSURE: | | Flow @ 12v | | Flow @ 115/60 | | Flow @ 240/50 | | Flow @ 115/60 | | Flow @ 100/60 | | Flow @ 115/60 | | Flow @ 240/50 | |
| CFM @ PSI | LPM @ bar | | | | | | | | | | | | | | |
| PSI | bar | CFM | LPM | CFM | LPM | CFM | LPM | CFM | LPM | CFM | LPM | CFM | LPM | CFM | LPM |
| 0 | 0 | 1.35 | 38.2 | 1.50 | 42.5 | 1.20 | 33.9 | 1.50 | 42.5 | 2.70 | 76.5 | 2.70 | 76.5 | 2.20 | 62.3 |
| 5 | .5 | 1.00 | 25.8 | 1.20 | 30.8 | .95 | 24.3 | 1.20 | 30.8 | 2.53 | 67.4 | 2.53 | 68.7 | 1.95 | 52.0 |
| 10 | 1.5 | .80 | 17.6 | .95 | 20.5 | .75 | 16.1 | .95 | 20.5 | 2.20 | 55.9 | 2.30 | 57.5 | 1.70 | 40.5 |
| 15 | | | | | | | | | | 1.95 | 2.00 | 2.00 | | 1.40 | |
| MAX. CONTINUOUS PRESSURE: | | 10 PSI | .7 bar | 10 PSI | .7 bar | 10 PSI | .7 bar | 10 PSI | .7 bar | 10 PSI | .7 bar | 10 PSI | .7 bar | 10 PSI | .7 bar |
| MAX. INTERMITTENT PRESSURE: | | 10 PSI | .7 bar | 10 PSI | .7 bar | 10 PSI | .7 bar | 10 PSI | .7 bar | 10 PSI | .7 bar | 10 PSI | .7 bar | 10 PSI | .7 bar |
| VACUUM: | | Flow @ 12v | | Flow @ 115/60 | | Flow @ 240/50 | | Flow @ 115/60 | | Flow @ 100/60 | | Flow @ 115/60 | | Flow @ 240/50 | |
| CFM @ IN. hg | LPM @ mbar(gauge) | | | | | | | | | | | | | | |
| IN. hg | mbar (gauge) | CFM | LPM | CFM | LPM | CFM | LPM | CFM | LPM | CFM | LPM | CFM | LPM | CFM | LPM |
| 0 | 0 | 1.35 | 38.2 | 1.50 | 42.5 | 1.20 | 33.9 | 1.50 | 42.5 | 2.70 | 76.5 | 2.70 | 76.5 | 2.20 | 62.3 |
| 5 | -100 | .95 | 31.5 | 1.10 | 35.8 | .91 | 29.1 | 1.10 | 35.8 | 2.10 | 66.4 | 2.10 | 66.4 | 1.75 | 54.8 |
| 10 | -200 | .60 | 25.1 | .80 | 29.6 | .64 | 24.4 | .80 | 29.6 | 1.60 | 56.9 | 1.60 | 56.9 | 1.35 | 47.5 |
| 15 | -400 | .30 | 13.9 | .50 | 19.6 | .41 | 15.8 | .50 | 19.6 | 1.10 | 40.2 | 1.00 | 39.1 | .90 | 33.6 |
| 20 | -600 | .10 | 5.4 | .20 | 9.5 | .17 | 7.9 | .20 | 9.5 | .70 | 24.9 | .70 | 23.7 | .50 | 19.3 |
| 25 | -800 | | | | | | | | | .25 | 10.6 | .25 | 10.6 | .25 | 9.0 |
| MAX. VACUUM (IN. hg): | | 24" Hg | -813 mbar | 24" Hg | -813 mbar | 24" Hg | -813 mbar | 24" Hg | -813 mbar | 25" Hg | -836 mbar | 25" Hg | -836 mbar | 25" Hg | -836 mbar |
| MAX. AMBIENT TEMPERATURE: | | 95°F | 35°C | 95°F | 35°C | 95°F | 35°C | 95°F | 35°C | 95°F | 35°C | 95°F | 35°C | 95°F | 35°C |
| MIN. AMBIENT TEMPERATURE: | | 35°F | 2°C | 35°F | 2°C | 35°F | 2°C | 35°F | 2°C | 35°F | 2°C | 35°F | 2°C | 35°F | 2°C |
| MOTOR VOLTAGE/FREQUENCY: | | 12v | | 115/60/50/1 | | 220/240/60/50/1 | | 115/60/50/1 | | 100/50/60/1 | | 110/115/50/60/1 | | 220/240/60/50/1 | |
| HORSEPOWER: | | 1/10 | | 1/10 | | 1/10 | | 1/10 | | 1/6 | | 1/6 | | 1/6 | |
| MOTOR TYPE: | | Permanent Magnet | | PSC | | PSC | | Split Phase | | PSC | | PSC | | PSC | |
| CURRENT AT RATED LOAD (AMPS): | | 7.5 | | 1.60 | | .55 | | 1.60 | | 1.90 | | 2.30 | | 1.10 | |
| POWER AT RATED LOAD (WATTS): | | 90 | | 120 | | 120 | | 120 | | 200 | | 210 | | 190 | |
| STARTING CURRENT (LOCKED ROTOR, AMPS): | | 65.0 | | 5.0 | | 2.2 | | 13.5 | | 8.8 | | 9.9 | | 5.0 | |
| INSULATION CLASS: | | B | | B | | B | | B | | B | | B | | B | |
| MIN. FULL LOAD SPEED (RPM): | | 2820 | | 3500 | | 2820 | | 3500 | | 3400 | | 3400 | | 2950 | |
| THERMAL PROTECTOR: | | Yes | | Yes | | Yes | | Yes | | Yes | | Yes | | Yes | |
| NET WEIGHT: | | 8 lbs. | 3.6 Kg | 8 lbs. | 3.6 Kg | 8 lbs. | 3.6 Kg | 8.5 lbs. | 3.9 Kg | 9.3 lbs. | 4.3 Kg | 9.3 lbs. | 4.3 Kg | 9.3 lbs. | 4.3 Kg |
| SHIP WEIGHT: | | 10 lbs. | 4.5 Kg | 9 lbs. | 4.1 Kg | 9 lbs. | 4.1 Kg | 9 lbs. | 4.1 Kg | 13 lbs. | 5.9 Kg | 13 lbs. | 5.9 fKg | 13 lbs. | 5.9 Kg |
| FRAME SIZE: | | | | | | | | | | 48 | | 48 | | 48 | |



The information presented in this material is based on technical data and test results of nominal units. It is believed to be accurate and reliable and is offered as an aid to help in the selection of Thomas products. It is the responsibility of the user to determine the suitability of the product for his intended use and the user assumes all risk and liability whatsoever in connection therewith. Thomas Industries does not warrant, guarantee or assume any obligation or liability in connection with this information.

NOTE: Models pictured are representative of the series and do not represent a specific model number. Consult factory for detailed physical description.