

MINIATURE DIAPHRAGM

Compressors

3004 Series

MODELS:

Standard models available.

3004-0003, 3004-0002

FEATURES:

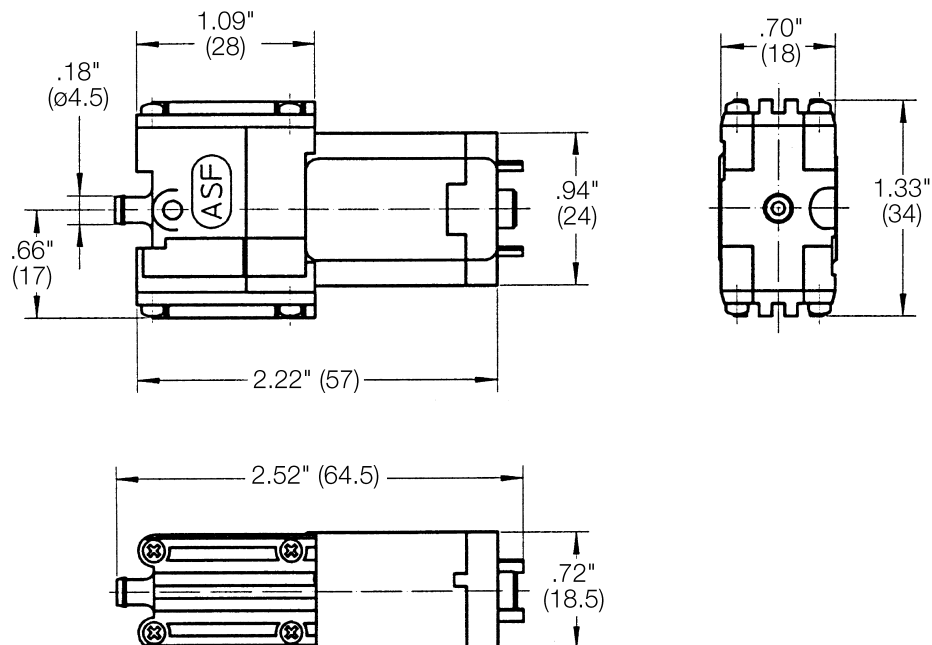
- Oil-less design
- Maintenance free
- Low noise level
- Small, lightweight

Consult factory for custom applications



DIMENSIONS:

Millimeters are in ()



3004 SERIES PERFORMANCE DATA:

| | | STANDARD | | STANDARD | |
|--|-----------|------------------|----------|------------------|----------|
| MODEL NUMBER: | | 3004-0003 | | 3004-0002 | |
| HEAD CONFIGURATION: | | Pressure | | Pressure | |
| PRESSURE: | | Flow @ 6V | | Flow @ 12V | |
| CFM @ PSI | LPM @ bar | | | | |
| PSI | bar | LPM | LPM | LPM | LPM |
| 0 | 0 | 2 l/min | 2 l/min | 2 l/min | 2 l/min |
| MAX. CONTINUOUS PRESSURE: | | 7 PSI | 500 mbar | 7 PSI | 500 mbar |
| MAX. AMBIENT TEMPERATURE: | | 104°F | 40°C | 104°F | 40°C |
| MIN. AMBIENT TEMPERATURE: | | 50°F | 10°C | 50°F | 10°C |
| MOTOR TYPE: | | Permanent Magnet | | Permanent Magnet | |
| MOTOR VOLTAGE: | | 6V | | 12V | |
| MAX. CURRENT (AMPS): | | 200 mA | | 360 mA | |
| LIFE TIME (in 6 second cycles): | | >150,000 Cycles | | >150,000 Cycles | |
| WEIGHT: | | 51 g | | 51 g | |

The information presented in this material is based on technical data and test results of nominal units. It is believed to be accurate and reliable and is offered as an aid to help in the selection of Thomas products. It is the responsibility of the user to determine the suitability of the product for his intended use and the user assumes all risk and liability whatsoever in connection therewith. Thomas Industries does not warrant, guarantee or assume any obligation or liability in connection with this information.

Note: Models pictured are representative of the series and do not represent a specific model number. Consult factory for detailed physical description.