

# MINIATURE DIAPHRAGM

## Pumps & Compressors 7011 Series

### MODELS:

Standard models available.

7011-0008, 7011-0042

7011-0037, 7011-0069

Other models based on availability and minimum purchase.

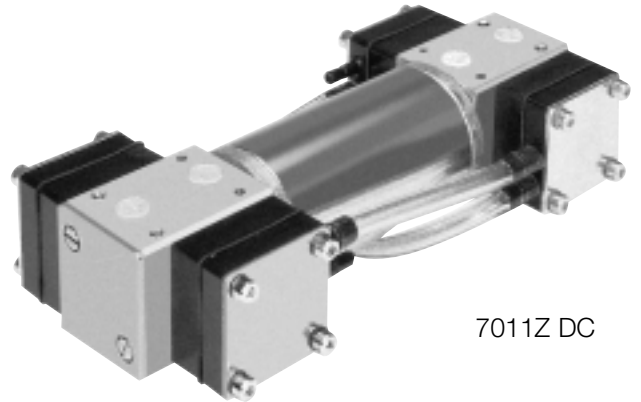
### FEATURES:

- Oil-less
- Maintenance free
- Low noise level
- Restart capability against pressure or vacuum
- Wide range of wetted parts
- Optional integrated pressure switch
- High efficiency

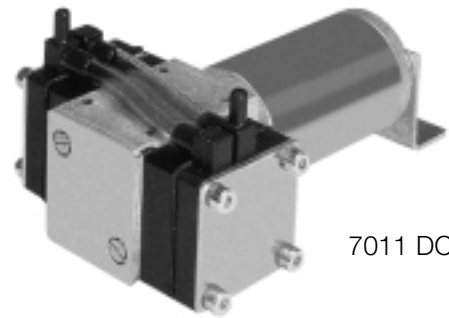
Consult factory for custom applications

### DIMENSIONS:

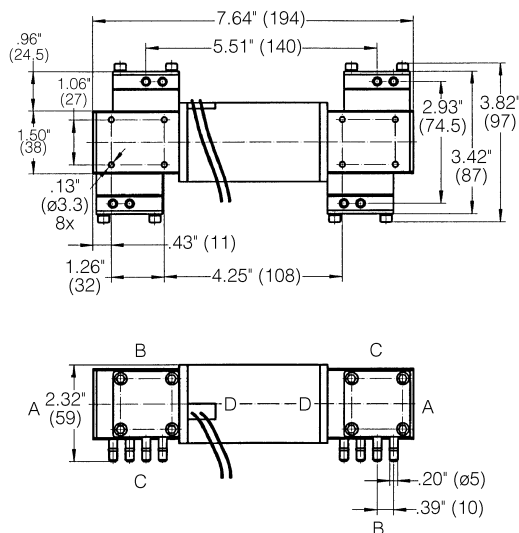
Millimeters are in ( )



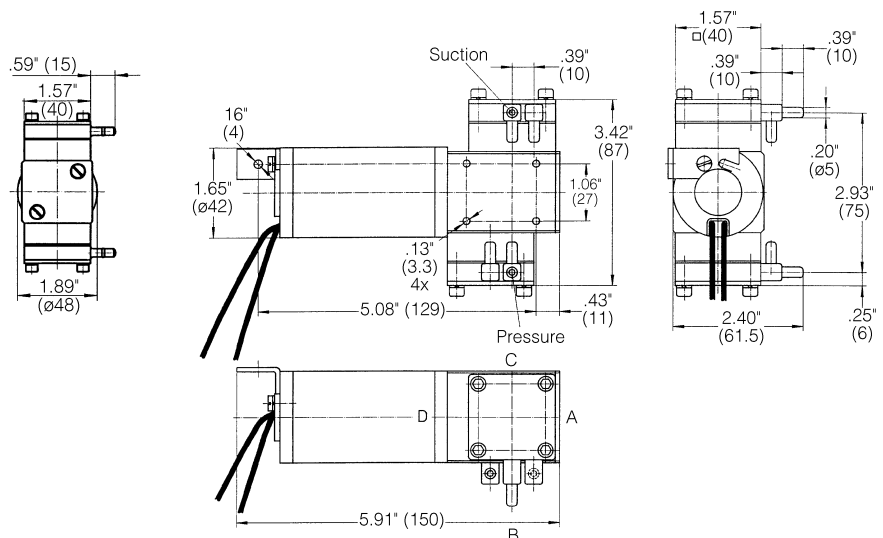
7011Z DC



7011 DC



7011Z DC

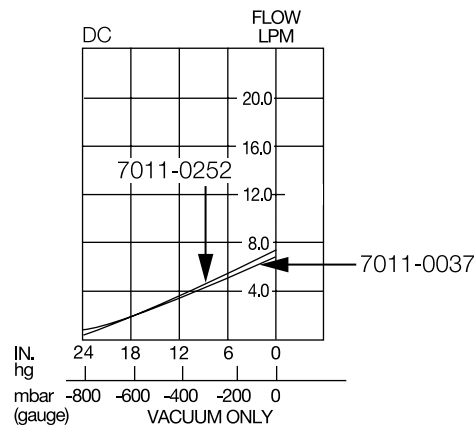
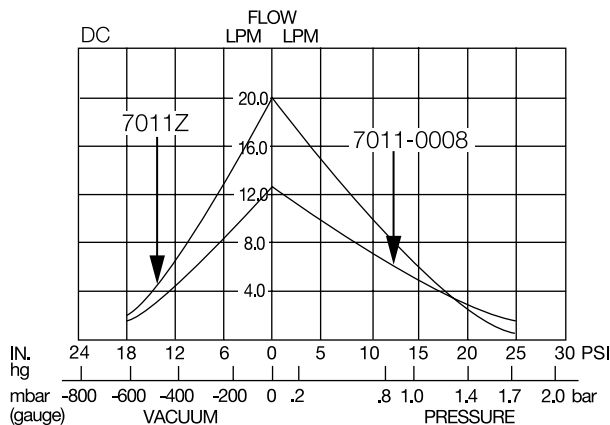


7011 DC



# 7011 SERIES PERFORMANCE DATA:

		STANDARD				STANDARD	
<b>MODEL DESCRIPTION:</b>		7011DVP/18-2.2		7011R/FM-2.2N		7011ZVR/FM-2.2	
<b>COMPRESSOR ARTICLE NUMBER:</b>		7011-0008 / 7011-0042		7011-0252		7011-0037 / 7011-0069	
<b>HEAD CONFIGURATION:</b>		Pressure/Vacuum		Vacuum		Vacuum	
<b>PRESSURE:</b>		Flow @ 12v / 24v					
LPM @ PSI	LPM @ bar						
PSI	bar	LPM	LPM				
0	0	12.4	12.4				
5	.2	9.1	10.2				
10	.4	7.0	8.1				
15	.6	4.2	6.4				
20	.8	3.5	5.3				
25	1.0	2.6	4.2				
	1.4		3.5				
	1.7		2.6				
<b>MAX. CONTINUOUS PRESSURE:</b>		12 PSI		0.8 bar			
<b>MAX. INTERMITTENT PRESSURE:</b>		33 PSI		2.3 bar			
<b>VACUUM:</b>		Flow @ 12v / 24v		Flow @ 12v		Flow @ 12v / 24v	
LPM @ IN. hg	LPM @ mbar (gauge)						
IN. hg	mbar (gauge)	LPM	LPM	LPM	LPM	LPM	LPM
0	0	12.4	12.4	7.5	7.5	7.0	7.0
5	-200	8.3	7.5	4.3	5.2	4.7	5.6
10	-400	5.5	4.5	3.2	3.2	3.5	3.5
15	-600	3.0	1.5	2.1	1.8	2.3	2.0
20	-800	.9		1.3	.5	1.6	.8
25							
<b>MAX. VACUUM:</b>		21.6" hg		-730 mbar		29.0" hg	
<b>MAX. CONTINUOUS VACUUM:</b>		21.6" hg		-730 mbar		29.0" hg	
<b>MAX. RESTART VACUUM:</b>		0" hg		0 mbar		29.0" hg	
<b>AMBIENT TEMPERATURE:</b>		32°-104°F		0°-40°C		59°-104°F	
<b>MOTOR TYPE:</b>		DC		DC		DC	
<b>MOTOR VOLTAGE:</b>		12v / 24v		12v		12v / 24v	
<b>POWER CONSUMPTION (WATTS):</b>		29		29		35	
<b>INSULATION CLASS:</b>		E		E		E	
<b>WEIGHT:</b>		2 lbs.		.9 Kg		2 lbs.	
						.9 kg	
						3 lbs.	
						1.4 Kg	



The information presented in this material is based on technical data and test results of nominal units. It is believed to be accurate and reliable and is offered as an aid to help in the selection of Thomas products. It is the responsibility of the user to determine the suitability of the product for his intended use and the user assumes all risk and liability whatsoever in connection therewith. Thomas Industries does not warrant, guarantee or assume any obligation or liability in connection with this information.

**Note:** Models pictured are representative of the series and do not represent a specific model number. Consult factory for detailed physical description.

