

MINIATURE ROTARY

Compressors and Vacuum Pumps

G01 Series

MODELS:

Standard models available.

G12/01-E, G6/01-E

Other models based on availability and minimum purchase.

FEATURES:

- Oil-less
- Maintenance free
- Compact
- Pulsation free
- High flow
- Low vibration
- Reversible flow

Consult factory for custom applications

DIMENSIONS:

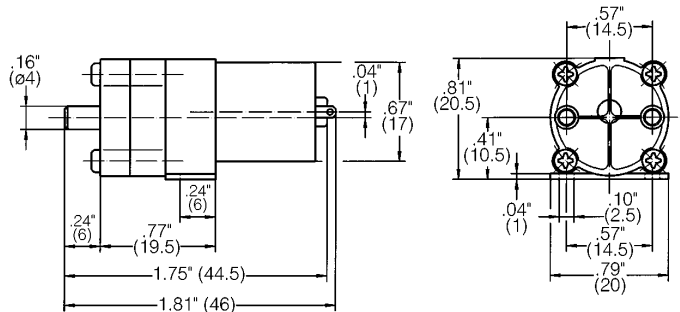
Millimeters are in ()



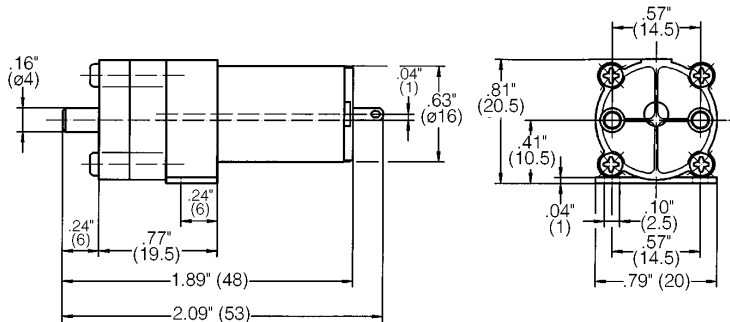
G6/01-K-LC



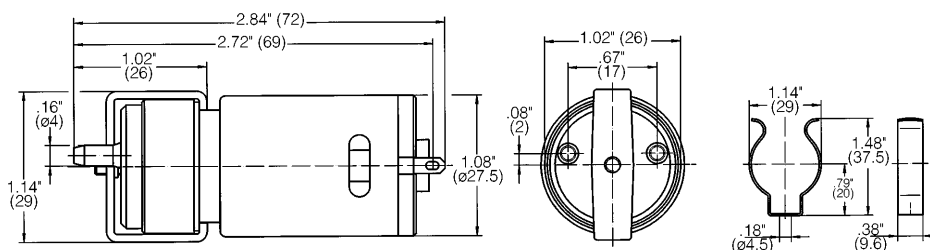
G6/01-K-E



G6/01-K-LC



G6/01-K-E



G12/01



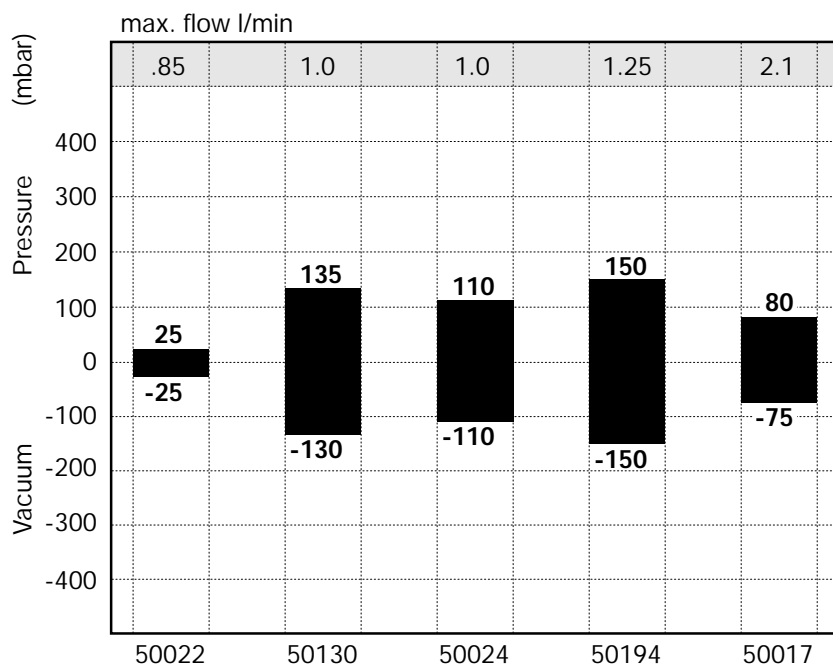
G12/01

ISO 9001
CERTIFIED

THOMAS
COMPRESSORS
& VACUUM PUMPS
First Name in Innovation

G01 SERIES PERFORMANCE DATA:

G6/01 SERIES PERFORMANCE DATA:								STANDARD		STANDARD	
MODEL NUMBER:		G6/01-K-LC		G6/01-KE		BL G12/01-4		G12/01-E		G6/01-E	
COMPRESSOR ARTICLE NUMBER:		50017		50022		50130		50194		50024	
HEAD CONFIGURATION:		Pressure/Vacuum		Pressure/Vacuum		Pressure/Vacuum		Pressure/Vacuum		Pressure/Vacuum	
PRESSURE:		Flow @ 6v		Flow @ 6v		Flow @ 12v		Flow @ 12v		Flow @ 6v	
LPM @ PSI	LPM @ mbar										
PSI	mbar	LPM	LPM	LPM	LPM	LPM	LPM	LPM	LPM	LPM	LPM
0	0	2.1	2.1	.85	.85	1.0	1.0	1.25	1.25	1.0	1.0
1.0	50	0.8	0.8			0.5	0.6	0.7	0.8		
1.5	100					0.2	0.2	0.4	0.4		
MAX. CONTINUOUS PRESSURE:		0 PSI	0 mbar	0 PSI	0 mbar	1.4 PSI	100 mbar	1.4 PSI	100 mbar	1.5 PSI	110 mbar
MAX. INTERMITTENT PRESSURE:		1.6 PSI	80 mbar	.36 PSI	25 mbar	2.0 PSI	135 mbar	2.2 PSI	150 mbar	1.5 PSI	110 mbar
VACUUM:		Flow @ 6v		Flow @ 6v		Flow @ 12v		Flow @ 12v		Flow @ 6v	
LPM @ IN. Hg	LPM @ mbar										
IN. Hg	mbar (gauge)	LPM	LPM	LPM	LPM	LPM	LPM	LPM	LPM	LPM	LPM
0	0	2.1	2.1	.85	.85	1.0	1.0	1.25	1.25	1.0	1.0
1.5	-100	.08				0.6	0.2	0.8	0.4		
3.0	-200					0.2		0.4			
MAX. VACUUM:		0" hg	0 mbar	0" hg	0 mbar	3.0" hg	-100 mbar	3.0" hg	-100 mbar	3.3" hg	-110 mbar
MAX. INTERMITTENT VACUUM:		2.2" hg	-75 mbar	.74" hg	-25 mbar	3.8" hg	-130 mbar	4.4" hg	-150 mbar	3.3" hg	-110 mbar
RPM:		#		#		5400		6900		5100	
MOTOR TYPE:		PM		PM		PM		PM		PM	
MOTOR VOLTAGE:		6vDC		6vDC		12vDC		12vDC		6vDC	
POWER CONSUMPTION (WATTS):		1.2		0.18		2.6		1.6		0.78	
INSULATION CLASS:		F		B		E		B		B	
ROTATIONAL DIRECTION:		CW/CCW		CW/CCW		CCW		CW		CW	
WEIGHT:		.04 lbs	.02 Kg	.09 lbs	.04 Kg	.02 lbs	.01 Kg	.2 lbs	.09 Kg	.2 lbs	.09 Kg



The information presented in this material is based on technical data and test results of nominal units. It is believed to be accurate and reliable and is offered as an aid to help in the selection of Thomas products. It is the responsibility of the user to determine the suitability of the product for his intended use and the user assumes all risk and liability whatsoever in connection therewith. Thomas Industries does not warrant, guarantee or assume any obligation or liability in connection with this information.

Note: Models pictured are representative of the series and do not represent a specific model number. Consult factory for detailed physical description.

THOMAS
COMPRESSORS
& VACUUM PUMPS

1419 Illinois Avenue, P.O. Box 29
Sheboygan, WI 53082-0029 USA
(920) 457-4891 Fax (920) 451-4276
Internet: <http://www.thomaspumps.com>