

MINIATURE ROTARY

Compressors and Vacuum Pumps

G02 Series

MODELS:

Standard models available.

50095

FEATURES:

- Oil-less
- Maintenance free
- Compact
- Pulsation free
- High flow
- Low vibration
- Reversible flow

Consult factory for custom applications



G3/02EB



G12/02EB



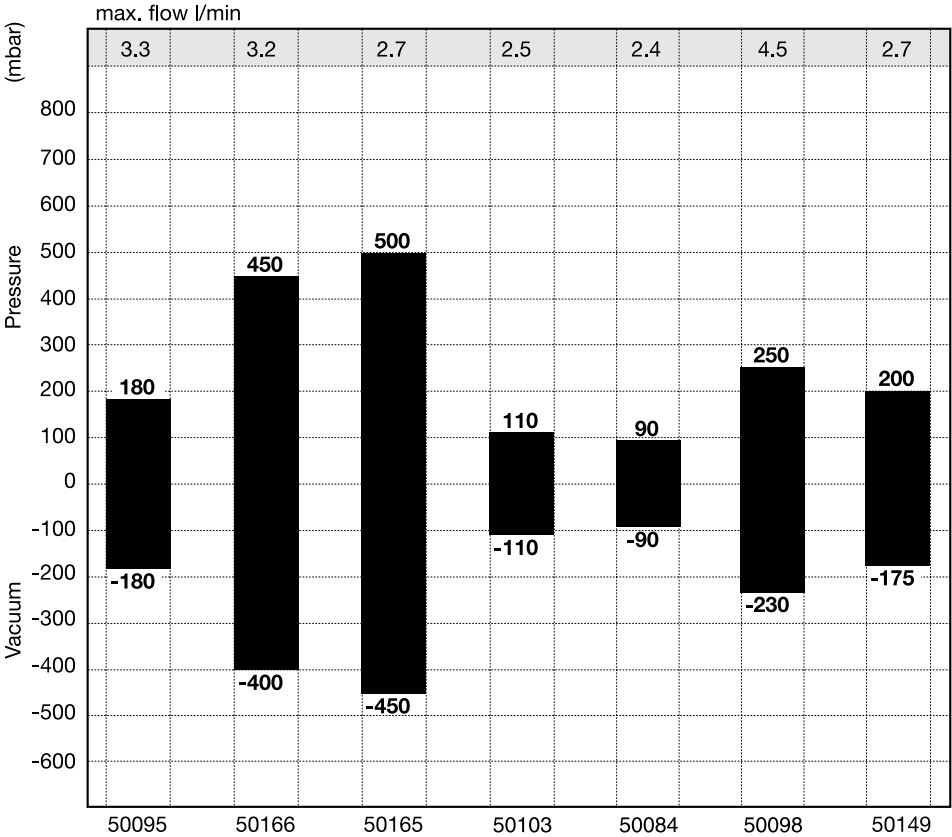
G12/02-8LC



G6/02LC

G02 SERIES PERFORMANCE DATA:

MODEL DESCRIPTION:		G12/02-EB - STANDARD		G12/02-8-LC		G12/02-8		G6/02-EB	
COMPRESSOR ARTICLE NUMBER:		50095		50166		50165		50103	
HEAD CONFIGURATION:		Pressure/Vacuum		Pressure/Vacuum		Pressure/Vacuum		Pressure/Vacuum	
PRESSURE:		Flow @ 12v		Flow @ 12v		Flow @ 12v		Flow @ 6v	
LPM @ PSI	LPM @ mbar								
PSI	mbar	LPM	LPM	LPM	LPM	LPM	LPM	LPM	LPM
0	0	3.3	3.3	3.2	3.2	2.7	2.7	2.5	2.5
1.0	50	2.1	2.5	2.2	2.2	1.8	1.8		
1.5	100	1.6	1.6	2.0	2.0	1.6	1.6		
3.0	200			1.4	1.4	1.1	1.1		
5.0	400			0.4	0.1	0.4	0.1		
MAX. CONTINUOUS PRESSURE:		1.4 PSI	100 mbar	0 PSI	0 mbar	2.9 PSI	200 mbar	1.6 PSI	110 mbar
MAX. INTERMITTENT PRESSURE:		2.6 PSI	180 mbar	6.5 PSI	450 mbar	7.3 PSI	500 mbar	1.6 PSI	110 mbar
VACUUM:		Flow @ 12v		Flow @ 12v		Flow @ 12v		Flow @ 6v	
LPM @ IN. Hg	LPM @ mbar								
IN. Hg	mbar (gauge)	LPM	LPM	LPM	LPM	LPM	LPM	LPM	LPM
0	0	3.3	3.3	3.2	3.2	2.7	2.7	2.5	2.5
1.5	-100	2.2	1.4	2.2	2.0	1.8	1.6		
3.0	-200	1.4		2.0	1.4	1.6	1.1		
5.0	-400			1.6	0.1	1.1	0.1		
10.0	-600			0.5		0.1			
MAX. VACUUM:		2.9" hg	-100 mbar	0" hg	0 mbar	2.9" hg	-100 mbar	3.3" hg	-110 mbar
MAX. INTERMITTENT VACUUM:		5.3" hg	-180 mbar	11.8" hg	-400 mbar	13.3" hg	-450 mbar	3.3" hg	-110 mbar
RPM:		6900		5600		4500		5000	
MOTOR TYPE:		PM		PM		PM		PM	
MOTOR VOLTAGE:		12vDC		12vDC		12vDC		6vDC	
POWER CONSUMPTION (WATTS):		2.6		6.6		3.8		1.2	
INSULATION CLASS:		B		F		B		B	
ROTATIONAL DIRECTION:		CW		CW/CCW		CW/CCW		CW	
WEIGHT:		.2 lbs	.09 Kg	.2 lbs	.09 Kg	.2 lbs	.09 Kg	.2 lbs	.09 Kg



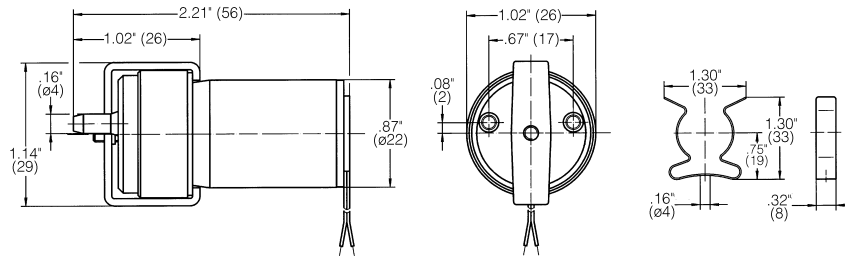
G02 SERIES PERFORMANCE DATA:

MODEL DESCRIPTION:		G3/02-EB		G24/02-EB		BL G12/02-4	
COMPRESSOR ARTICLE NUMBER:		50084		50098		50149	
HEAD CONFIGURATION:		Pressure/Vacuum		Pressure/Vacuum		Pressure/Vacuum	
PRESSURE:		Flow @ 3v		Flow @ 24v		Flow @ 12v	
LPM @ PSI	LPM @ mbar						
PSI	mbar	LPM	LPM	LPM	LPM	LPM	LPM
0	0	2.4	2.4	4.5	4.5	2.7	2.7
1.0	50					1.5	1.8
1.5	100					1.0	1.0
3.0	200						
5.0	400						
MAX. CONTINUOUS PRESSURE:		1.3 PSI	90 mbar	1.4 PSI	100 mbar	1.4 PSI	100 mbar
MAX. INTERMITTENT PRESSURE:		1.3 PSI	90 mbar	3.6 PSI	250 mbar	2.9 PSI	200 mbar
VACUUM:		Flow @ 3v		Flow @ 24v		Flow @ 12v	
LPM @ IN. Hg	LPM @ mbar						
IN. Hg	mbar (gauge)	LPM	LPM	LPM	LPM	LPM	LPM
0	0	2.4	2.4	4.5	4.5	2.7	2.7
1.5	-100					1.8	1.0
3.0	-200					1.0	
5.0	-400						
10.0	-600						
MAX. VACUUM:		2.7" hg	-90 mbar	2.9" hg	-100 mbar	2.9" hg	-100 mbar
MAX. INTERMITTENT VACUUM:		2.7" hg	-90 mbar	6.8" hg	-230 mbar	5.2" hg	-175 mbar
RPM:		4900		9700		5300	
MOTOR TYPE:		PM		PM		BLDC	
MOTOR VOLTAGE:		3vDC		24vDC		12vDC	
POWER CONSUMPTION (WATTS):		1.1		6.0		3.4	
INSULATION CLASS:		B		B		E	
ROTATIONAL DIRECTION:		CW		CW		CW	
WEIGHT:		.2 lbs	.09 Kg	.2 lbs	.09 Kg	.2 lbs	.09 Kg

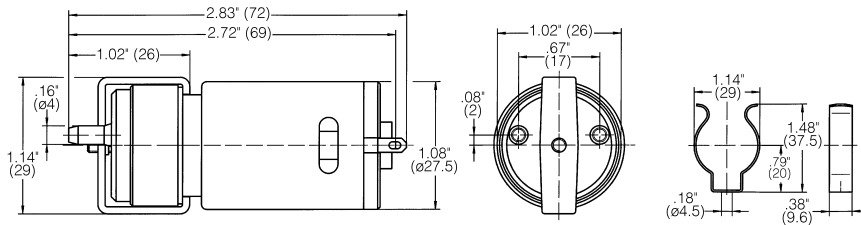
The information presented in this material is based on technical data and test results of nominal units. It is believed to be accurate and reliable and is offered as an aid to help in the selection of Thomas products. It is the responsibility of the user to determine the suitability of the product for his intended use and the user assumes all risk and liability whatsoever in connection therewith. Thomas Industries does not warrant, guarantee or assume any obligation or liability in connection with this information.

Note: Models pictured are representative of the series and do not represent a specific model number. Consult factory for detailed physical description.

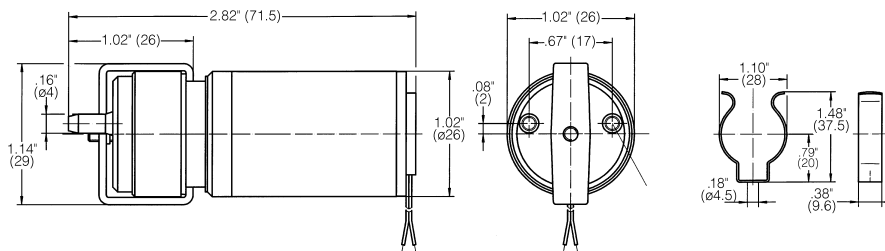
G02 SERIES DIMENSIONS: Millimeters are in ()



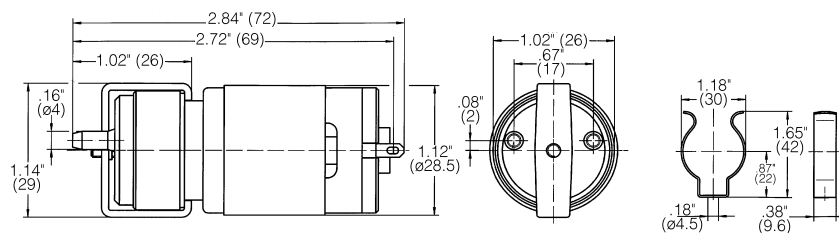
G3/02EB



G6/02LC



G12/02EB



G12/02-8-LC



1419 Illinois Avenue, P.O. Box 29
Sheboygan, WI 53082-0029 USA
(920) 457-4891 Fax (920) 451-4276
Internet: <http://www.thomaspumps.com>