

WOB-L® PISTON

Compressors and Vacuum Pumps

010 Series

MODELS:

Standard models available.

010CA26, 010CD26, 010CDC26/12

Other models based on availability and minimum purchase.

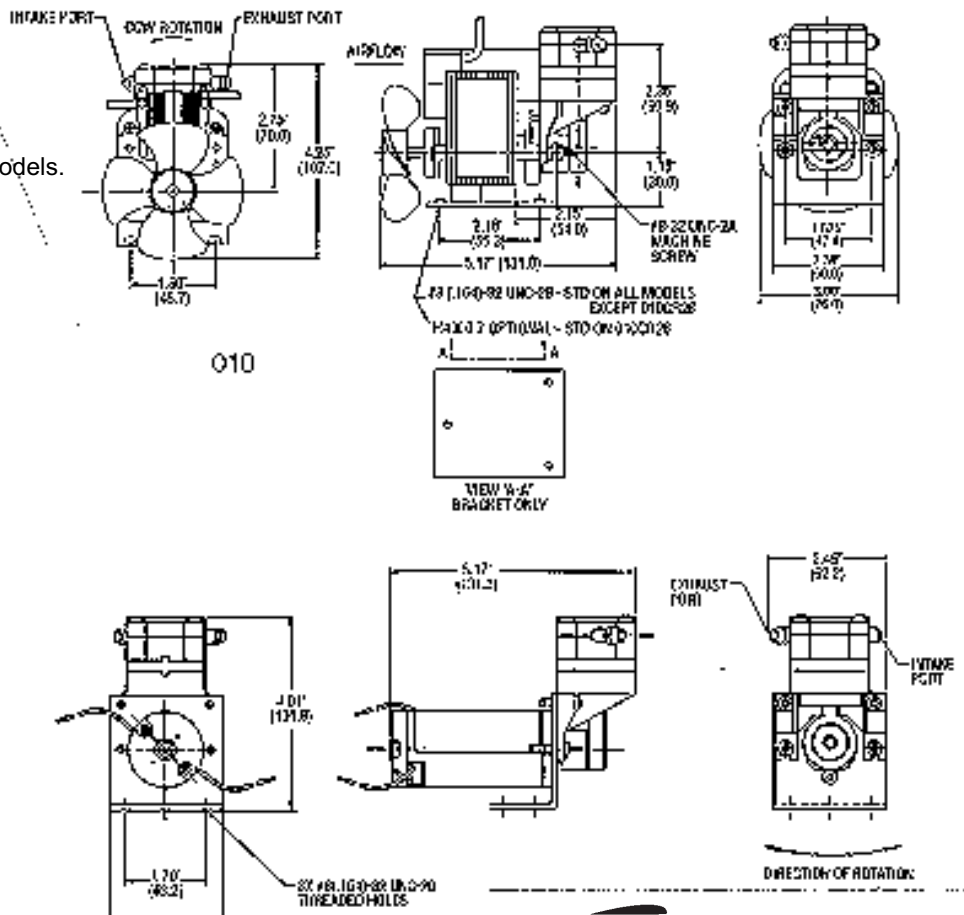
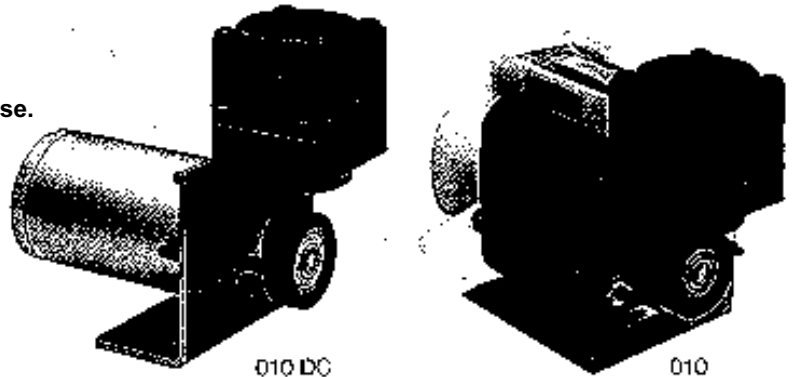
FEATURES:

- Oil-less, non-lube piston and cylinder
- Durable valves
- Balanced for smooth, low vibration operation
- Long-life, high performance PTFE compound piston ring
- Permanently lubricated motor shaft and connecting rod bearings
- Barb fittings for 1/4" I.D. tubing
- Low sound levels
- Field service capability
- 115 Volt, UL recognized motor and thermal protector (AC only)
- Mounting bracket
- CE approval on all standard 220-240/50hz models.
(Consult factory for non standard models)
- ISO 9001 Registered

Consult factory for custom applications

DIMENSIONS:

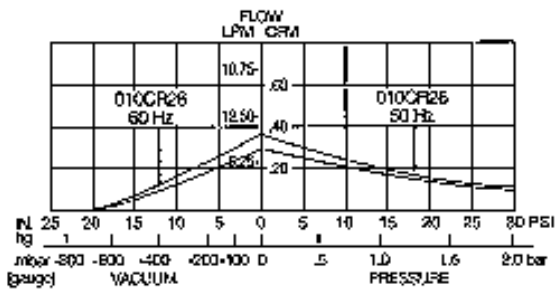
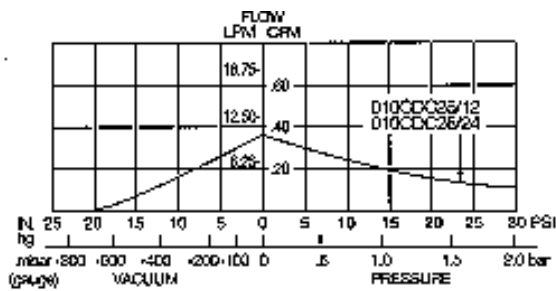
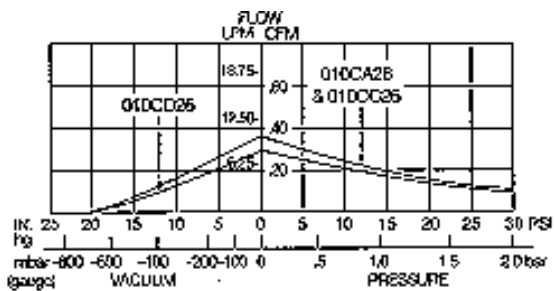
Millimeters are in ()



**THOMAS®**
COMPRESSORS
& VACUUM PUMPS
First Name in Innovation

010 SERIES PERFORMANCE DATA:

	STANDARD		STANDARD		STANDARD		STANDARD		STANDARD		STANDARD	
MODEL NUMBER:	010CA26		010CC26		010CD26		010CR26		010CDC26/12		010CDC26/24	
HEAD CONFIGURATION:	Pressure/Vacuum		Pressure/Vacuum		Pressure/Vacuum		Pressure/Vacuum		Pressure/Vacuum		Pressure/Vacuum	
STROKE:	.260 Inches		.260 Inches		.260 Inches		.260 Inches		.260 Inches		.260 Inches	
PRESSURE:	Flow @ 115v		Flow @ 230v		Flow @ 220V		Flow @ 100v-50/60 hz		Flow @ 12v		Flow @ 24v	
CFM @ PSI	LPM @ bar											
PSI	bar		CFM	LPM	CFM	LPM	CFM	LPM	CFM	LPM	CFM	LPM
0	0		.37	10.5	.37	10.5	.31	8.8	.31/.37	8.8/10.5	.37	10.5
5	.5		.33	8.8	.32	8.3	.28	7.4	.28/.33	7.4/ 8.8	.33	8.8
10	1.0		.29	7.4	.26	6.3	.24	6.3	.24/.29	6.3/ 7.4	.29	7.4
15	1.5		.26	5.4	.22	4.5	.22	4.6	.22/.26	4.6/ 5.4	.26	5.4
20	2.0		.20	4.1	.17	3.3	.17	3.3	.17/.20	3.6/ 4.1	.20	4.1
25			.17		.14		.15		.15/.17		.17	
30			.14		.11		.12		.12/.14		.14	
MAX. CONTINUOUS PRESSURE:	10 PSI	.7 bar	10 PSI	.7 bar	10 PSI	.7 bar	10 PSI	7.5 bar	10 PSI	.7 bar	10 PSI	.7 bar
MAX. INTERMITTENT PRESSURE:	30 PSI	2.1 bar	30 PSI	2.1 bar	30 PSI	2.1 bar	30 PSI	2.1 bar	30 PSI	2.1 bar	30 PSI	2.1 bar
VACUUM:	Flow @ 115v		Flow @ 230v		Flow @ 220V		Flow @ 100v-50/60 hz		Flow @ 12v		Flow @ 24v	
CFM @ IN.hg	LPM @ mbar (gauge)											
IN.hg	mbar (gauge)		CFM	LPM	CFM	LPM	CFM	LPM	CFM	LPM	CFM	LPM
0	0		.37	10.5	.37	10.5	.31	8.8	.31/.37	8.8/10.5	.37	10.5
5	-100		.27	8.8	.28	9.0	.23	7.4	.23/.27	7.4/ 8.8	.27	8.8
10	-200		.18	7.2	.19	7.5	.16	6.2	.16/.18	6.2/ 7.2	.18	7.2
15	-400		.10	4.3	.11	4.6	.09	3.8	.09/.10	3.8/ 4.3	.10	4.3
20	-600		.02	1.6	.04	2.0	.02	1.5	.02/.02	1.5/ 1.6	.02	1.6
MAX. VACUUM:	22.3" hg	-756 mbar	22.3" hg	-756 mbar	22.3" hg	-756 mbar	22.3" hg	-756 mbar	22.3" hg	-756 mbar	22.3" hg	-756 mbar
MAX. AMBIENT TEMPERATURE:	104°F	40°C	104°F	40°C	104°F	40°C	104°F	40°C	104°F	40°C	104°F	40°C
MIN. AMBIENT TEMPERATURE:	50°F	10°C	50°F	10°C	50°F	10°C	50°F	10°C	50°F	10°C	50°F	10°C
MAX. RESTART PRESSURE:	0 PSI	0 bar	0 PSI	0 bar	0 PSI	0 bar	0 PSI	0 bar	30 PSI	2.1 bar	30 PSI	2.1 bar
MAX. RESTART VACUUM:	0" hg	0 mbar	0" hg	0 mbar	0" hg	0 mbar	0" hg	0 mbar	22.3" hg	-756 mbar	22.3" hg	-756 mbar
MOTOR VOLTAGE/FREQUENCY:	115/60/1		230/60/1		220/50/1		100/50-60/1		12v DC		24v DC	
HORSEPOWER:	1/25		1/25		1/25		1/25		1/25		1/25	
MOTOR TYPE:	Shaded Pole		Shaded Pole		Shaded Pole		Shaded Pole		Permanent Magnet		Permanent Magnet	
CURRENT AT RATED LOAD (AMPS):	1.3		.8		.7		2.2		2.5		1.3	
POWER AT RATED LOAD (WATTS):	85		80		70		95					
STARTING CURRENT (LOCKED ROTOR AMPS):	2.1		1.0		.9		3.0		6.7		3.5	
INSULATION CLASS:	B		B		B		B		B		B	
MIN. FULL LOAD SPEED (RPM):	3000		3000		2500		2500/3000		3000		3000	
THERMAL PROTECTOR:	Yes		Yes		Yes		Yes		No		No	
NET WEIGHT:	3.25 lbs.	1.5 Kg	3.25 lbs.	1.5 Kg	3.25 lbs.	1.5 Kg	3.25 lbs.	1.5 Kg	1.63 lbs.	.7 Kg	1.63 lbs.	.7 Kg



The information presented in this material is based on technical data and test results of nominal units. It is believed to be accurate and reliable and is offered as an aid to help in the selection of Thomas products. It is the responsibility of the user to determine the suitability of the product for his intended use and the user assumes all risk and liability whatsoever in connection therewith. Thomas Industries does not warrant, guarantee or assume any obligation or liability in connection with this information.

Note: Models pictured are representative of the series and do not represent a specific model number. Consult factory for detailed physical description.

THOMAS
COMPRESSORS
& VACUUM PUMPS
1419 Illinois Avenue, P.O. Box 29
Sheboygan, WI 53082-0029 USA
(920) 457-4891 FAX (920) 451-4276
Internet: <http://www.thomaspumps.com>