

WOB-L® PISTON

Pumps and Compressors

014 Series

MODELS:

Standard models available.

014CDC20/12, 014CA28

Other models based on availability and minimum purchase.

014CA20, 014CA24

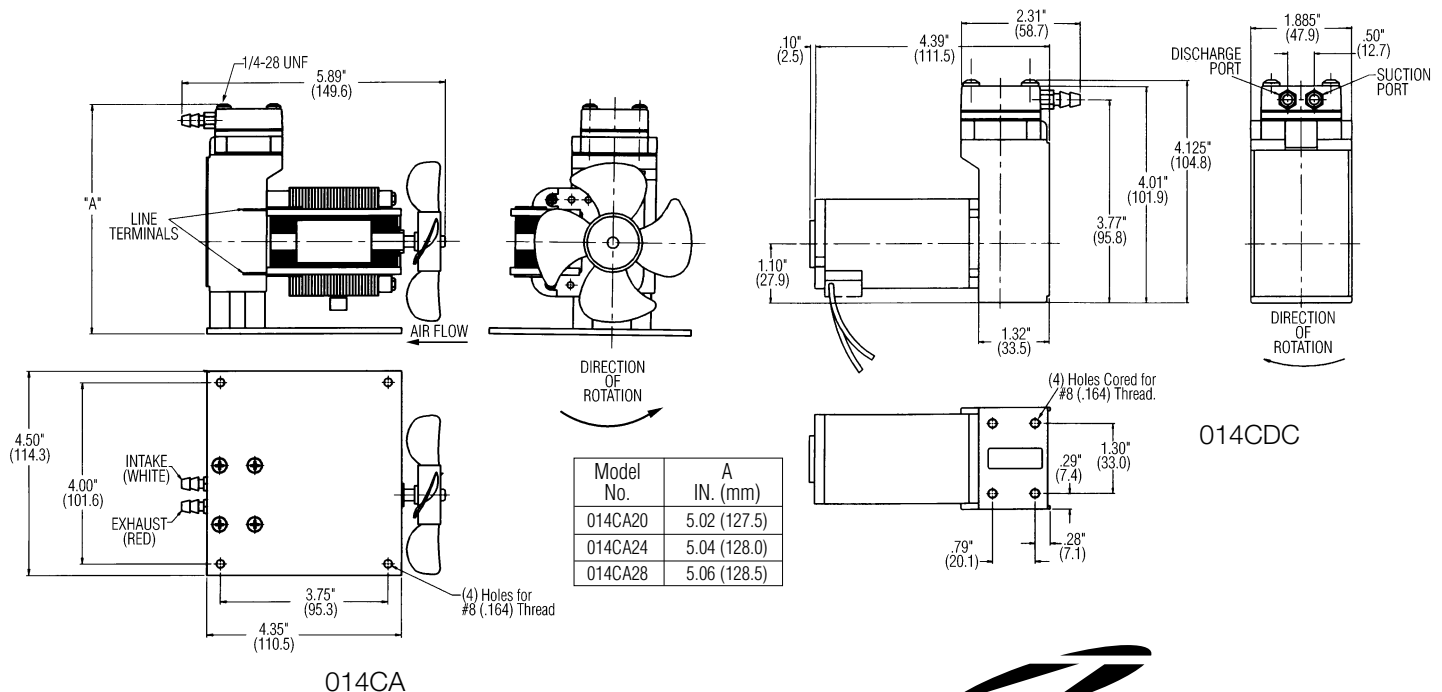
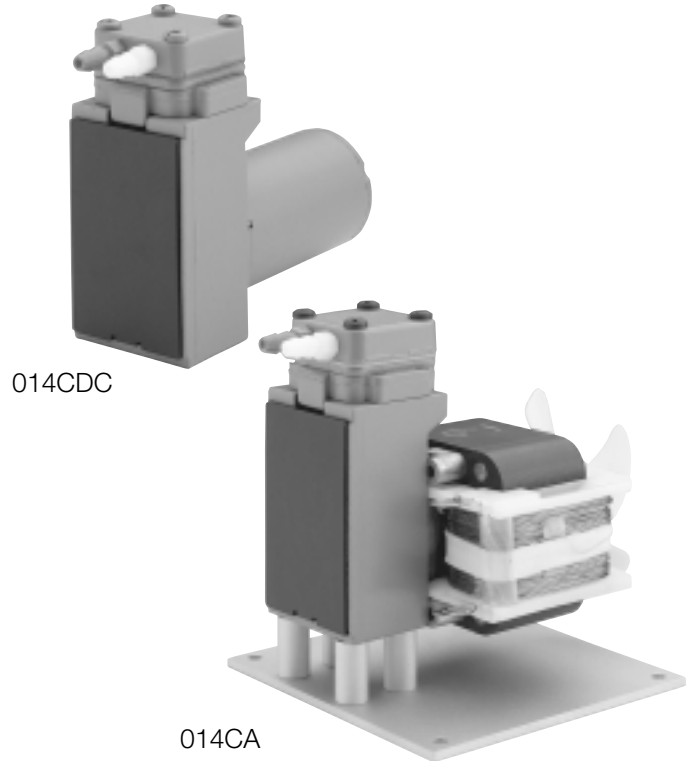
FEATURES:

- Oil-less, non-lube piston and cylinder
- Stainless steel valves
- Long-life, high performance
- Teflon®-PTFE compound piston ring
- Lightweight, diecast aluminum components
- Hard-coated aluminum cylinder for maximum heat transfer
- Balanced for smooth, low vibration operation
- Field service capability
- Barb fittings for 3/16" to 1/4" tubing
- Permanently lubricated motor shaft and connecting rod bearings
- 115 Volt, UL recognized motor and thermal protector

Consult factory for custom applications

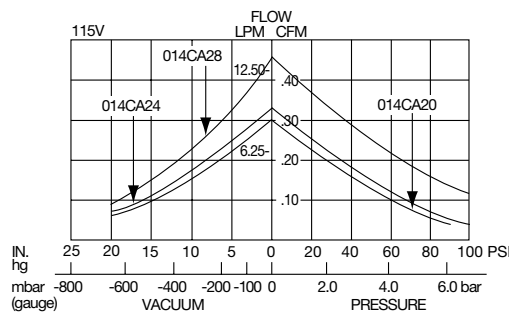
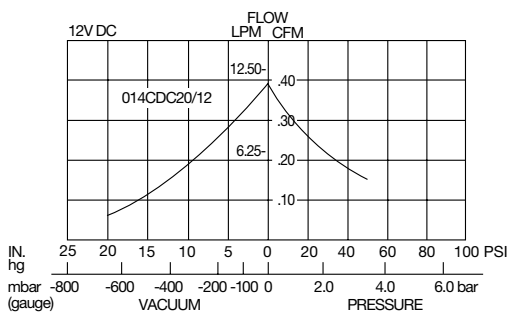
DIMENSIONS:

Millimeters are in ()



014 SERIES PERFORMANCE DATA:

		STANDARD						STANDARD	
MODEL NUMBER:		014CDC20/12		014CA20		014CA24		014CA28	
HEAD CONFIGURATION:		Pressure/Vacuum		Pressure/Vacuum		Pressure/Vacuum		Pressure/Vacuum	
STROKE:		.200 Inches		.200 Inches		.240 Inches		.280 Inches	
PRESSURE:		Flow @ 12V		Flow @ 115V		Flow @ 115V		Flow @ 115V	
CFM @ PSI	LPM @ bar								
PSI	bar	CFM	LPM	CFM	LPM	CFM	LPM	CFM	LPM
0	0	.39	11.0	.30	8.5	.34	9.6	.46	13.0
10	.5	.26	8.4	.26	7.7	.30	8.8	.37	11.2
20	1.0	.22	6.9	.22	6.9	.26	8.0	.32	9.8
30	1.5	.18	6.0	.18	6.0	.22	7.2	.28	8.9
40	2.0	.16	5.2	.15	5.2	.19	6.3	.26	8.0
50	3.0	.14	4.3	.12	4.0	.16	5.1	.23	7.1
60	5.0			.09	2.2	.13	3.0	.22	5.0
70	7.0			.08		.11	1.0	.18	3.3
80				.07		.09		.17	
90				.04		.07		.14	
100						.04		.12	
MAX. CONTINUOUS PRESSURE:		20 PSI	1.4 bar	90 PSI	6.2 bar	100 PSI	6.9 bar	100 PSI	6.9 bar
MAX. INTERMITTENT PRESSURE:		50 PSI	3.4 bar	90 PSI	6.2 bar	100 PSI	6.9 bar	100 PSI	6.9 bar
VACUUM:		Flow @ 12V		Flow @ 115V		Flow @ 115V		Flow @ 115V	
CFM @ IN.hg	LPM @ mbar (gauge)								
IN.hg	mbar (gauge)	CFM	LPM	CFM	LPM	CFM	LPM	CFM	LPM
0	0	.39	11.0	.30	8.5	.34	9.6	.46	13.0
5	-100	.24	8.5	.25	7.7	.29	8.8	.37	11.5
10	-200	.18	6.5	.19	6.8	.23	8.0	.28	10.0
15	-400	.12	4.9	.12	4.7	.14	5.6	.19	7.0
20	-600	.06	2.5	.06	2.5	.07	2.9	.09	3.8
MAX. VACUUM:		25.3" hg	-858 mbar	25.6" hg	-864 mbar	25.6" hg	-864 mbar	26.0" hg	-881 mbar
MAX. AMBIENT TEMPERATURE:		104°F	40°C	104°F	40°C	104°F	40°C	104°F	40°C
MIN. AMBIENT TEMPERATURE:		50°F	10°C	50°F	10°C	50°F	10°C	50°F	10°C
MAX. RESTART PRESSURE:		50 PSI	3.5 bar	0 PSI	0 bar	0 PSI	0 bar	0 PSI	0 bar
MAX. RESTART VACUUM:		25.3" hg	-857 mbar	0" hg	0 mbar	0" hg	0 mbar	0" hg	0 mbar
MOTOR VOLTAGE/FREQUENCY:		12V DC		115/60/1		115/60/1		115/60/1	
HORSEPOWER:		1/30		1/16		1/16		1/16	
MOTOR TYPE:		Permanent Magnet		Shaded Pole		Shaded Pole		Shaded Pole	
CURRENT AT RATED LOAD (AMPS):		3.0		2.2		2.2		2.4	
POWER AT RATED LOAD (WATTS):				120		125		140	
STARTING CURRENT (LOCKED ROTOR AMPS):		8.0		3.4		3.4		3.4	
INSULATION CLASS:		B		B		B		B	
MIN. FULL LOAD SPEED (RPM):		2600		3300		3300		3200	
THERMAL PROTECTOR:		No		Yes		Yes		Yes	
NET WEIGHT:		2.3 lbs.	1.04 Kg	4.7 lbs.	2.13 Kg	4.7 lbs.	2.13 Kg	4.7 lbs.	2.13 Kg



The information presented in this material is based on technical data and test results of nominal units. It is believed to be accurate and reliable and is offered as an aid to help in the selection of Thomas products. It is the responsibility of the user to determine the suitability of the product for his intended use and the user assumes all risk and liability whatsoever in connection therewith. Thomas Industries does not warrant, guarantee or assume any obligation or liability in connection with this information.

Note: Models pictured are representative of the series and do not represent a specific model number. Consult factory for detailed physical description.

THOMAS
PUMPS & COMPRESSORS
1419 Illinois Avenue, P.O. Box 29
Sheboygan, WI 53082-0029 USA
(920) 457-4891 Fax (920) 451-4276
Internet: <http://www.thomaspumps.com>