

WOB-L[®] PISTON

Compressors

115 Series

MODELS:

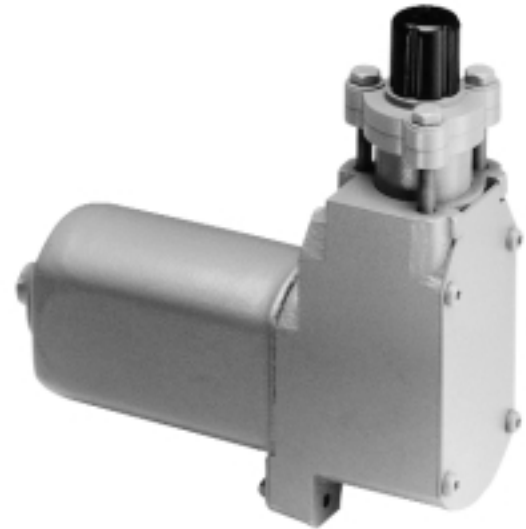
Standard models available.

115ADC56/12

Other models based on availability and minimum purchase.

FEATURES:

- Oil-less, non-lube piston and cylinder
- Stainless steel valves
- Lightweight, die-cast aluminum components
- Built-in check valve
- Hard-coated aluminum cylinder for maximum piston wear life
- Balanced for smooth, low vibration operation
- Long-life, high performance PTFE compound piston ring
- Built-in inlet filter
- Field service capability
- Dust and moisture resistant
- Permanently lubricated motor shaft and connecting rod bearings

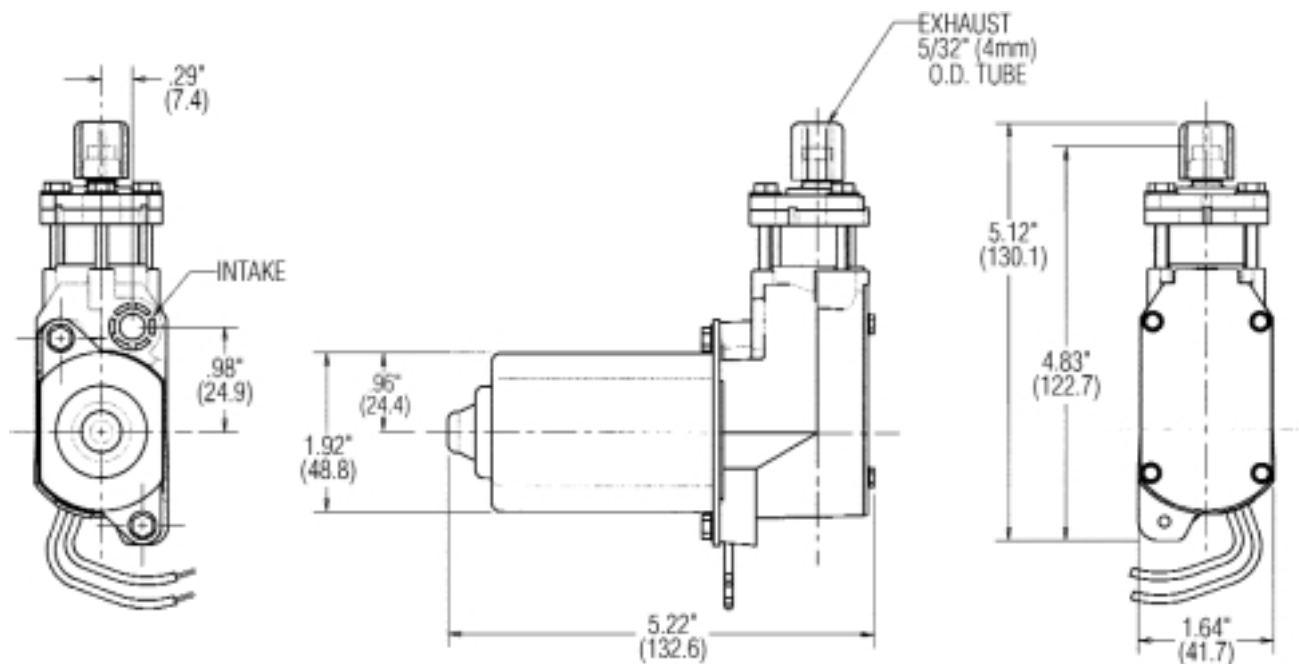


115 Series

Consult factory for custom applications

DIMENSIONS:

Millimeters are in ()



ISO 9001
CERTIFIED

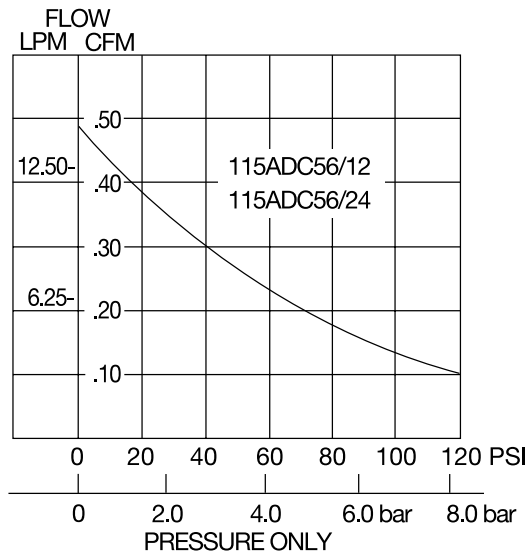
**THOMAS[®]**
PUMPS & COMPRESSORS

115 SERIES PERFORMANCE DATA:

		STANDARD			
MODEL NUMBER:		115ADC56/12		115ADC56/24	
HEAD CONFIGURATION:		Pressure Only		Pressure Only	
STROKE:		.560 Inches		.560 Inches	
PRESSURE:		Flow @ 12V		Flow @ 24V	
CFM @ PSI	LPM @ bar				
PSI	bar	CFM	LPM	CFM	LPM
0	0	.48	13.6	.48	13.6
10	.5	.39	11.7	.39	11.7
20	1.0	.36	10.7	.36	10.7
30	1.5	.33	10.0	.33	10.0
40	2.0	.29	9.4	.29	9.4
50	3.0	.27	8.0	.27	8.0
60	5.0	.25	6.4	.25	6.4
70	7.0	.23	4.4	.23	4.4
80		.21		.21	
90		.18		.18	
100		.16		.16	
110		.13		.13	
120		.10		.10	
MAX. INTERMITTENT PRESSURE:		120 PSI	8.3 bar	120 PSI	8.3 bar
MAX. DUTY CYCLE: (MINUTES ON/OFF AT 23°C)		10% (3 on / 30 off)		10% (3 on / 30 off)	
MAX. AMBIENT TEMPERATURE:		158°F	70°C	158°F	70°C
MIN. AMBIENT TEMPERATURE:		-22°F	-30°C	-22°F	-30°C
MAX. RESTART PRESSURE:		120 PSI	8.3 bar	120 PSI	8.3 bar
MOTOR VOLTAGE/FREQUENCY:		12V DC		24V DC	
HORSEPOWER:		1/15		1/15	
MOTOR TYPE:		Permanent Magnet		Permanent Magnet	
CURRENT AT RATED LOAD (AMPS):		9.0		6.0	
STARTING CURRENT (LOCKED ROTOR AMPS):		32.0		15.0	
INSULATION CLASS:		A		A	
MIN. FULL LOAD SPEED (RPM):		4000		4000	
NET WEIGHT:		1.6 lbs.	.7 Kg	1.6 lbs.	.7 Kg

The information presented in this material is based on technical data and test results of nominal units. It is believed to be accurate and reliable and is offered as an aid to help in the selection of Thomas products. It is the responsibility of the user to determine the suitability of the product for his intended use and the user assumes all risk and liability whatsoever in connection therewith. Thomas Industries does not warrant, guarantee or assume any obligation or liability in connection with this information.

Note: Models pictured are representative of the series and do not represent a specific model number. Consult factory for detailed physical description.



1419 Illinois Avenue, P.O. Box 29
Sheboygan, WI 53082-0029 USA
(920) 457-4891 Fax (920) 451-4276
Internet: <http://www.thomaspumps.com>