

# WOB-L® PISTON

Compressors

## 215 Series

### MODELS:

215ADC38/12, 215ADC38/24

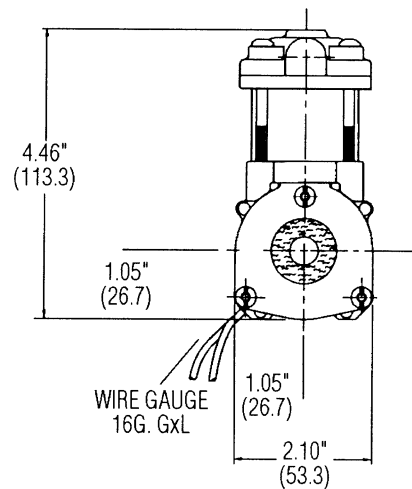
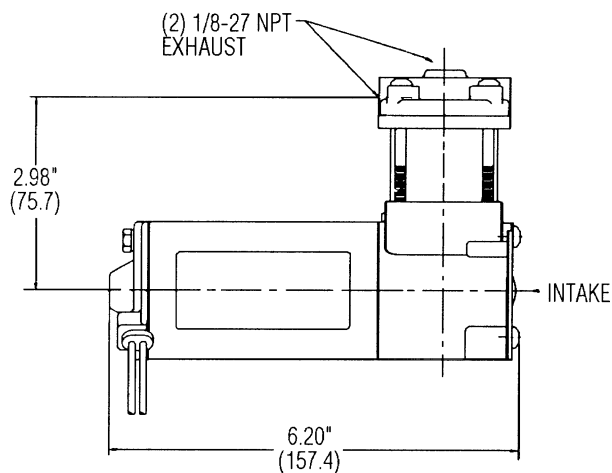
### FEATURES:

- Oil-less, non-lube piston and cylinder
- Stainless steel valves
- Lightweight, die-cast aluminum components
- Built-in check valve
- Hard-coated aluminum cylinder for maximum piston wear life
- Balanced for smooth, low vibration operation
- Long-life, high performance PTFE compound piston ring
- Inlet unloader or pressure restart
- Built-in inlet filter
- Field service capability
- Dust and moisture resistant
- Permanently lubricated motor shaft and connecting rod bearings

Consult factory for custom applications

### DIMENSIONS:

Millimeters are in ( )

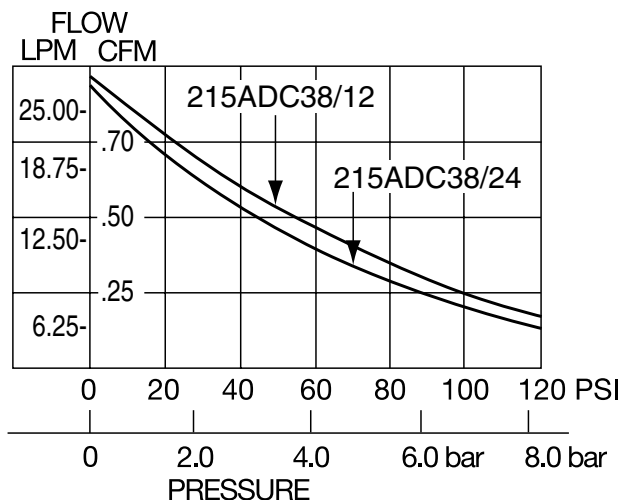


# 215 SERIES PERFORMANCE DATA:

<b>MODEL NUMBER:</b>		<b>215ADC38/12</b>		<b>215ADC38/24</b>	
<b>HEAD CONFIGURATION:</b>		Pressure Only		Pressure Only	
<b>STROKE:</b>		.380 Inches		.380 Inches	
<b>PRESSURE:</b>		Flow @ 12V		Flow @ 24V	
CFM @ PSI	LPM @ bar				
PSI	bar	CFM	LPM	CFM	LPM
0	0	.97	27.5	.92	26.1
10	.5	.87	25.4	.82	24.0
20	1.0	.76	23.2	.72	22.0
30	1.5	.66	21.1	.62	19.9
40	2.0	.61	19.6	.57	17.8
50	3.0	.53	16.5	.50	15.4
60	5.0	.46	11.6	.43	10.8
70	7.0	.42	8.3	.39	7.2
80		.38		.35	
90		.34		.30	
100		.30		.26	
110		.25		.22	
120		.22		.19	
<b>MAX. INTERMITTENT PRESSURE:</b>		120 PSI	8.3 bar	120 PSI	8.3 bar
<b>MAX. DUTY CYCLE: (MINUTES ON/OFF AT 23°C)</b>		10% (3 on / 30 off)		10% (3 on / 30 off)	
<b>MAX. AMBIENT TEMPERATURE:</b>		158°F	70°C	158°F	70°C
<b>MIN. AMBIENT TEMPERATURE:</b>		-40°F	-40°C	-40°F	-40°C
<b>MOTOR VOLTAGE/FREQUENCY:</b>		12V DC		24V DC	
<b>HORSEPOWER:</b>		1/6		1/6	
<b>MOTOR TYPE:</b>		Permanent Magnet		Permanent Magnet	
<b>CURRENT AT RATED LOAD (AMPS):</b>		16.0		7.5	
<b>STARTING CURRENT (LOCKED ROTOR AMPS):</b>		50.0		26.0	
<b>INSULATION CLASS:</b>		A		A	
<b>MIN. FULL LOAD SPEED (RPM):</b>		3650		3400	
<b>NET WEIGHT:</b>		3 lbs.	1.4 Kg	3 lbs.	1.4 Kg

The information presented in this material is based on technical data and test results of nominal units. It is believed to be accurate and reliable and is offered as an aid to help in the selection of Thomas products. It is the responsibility of the user to determine the suitability of the product for his intended use and the user assumes all risk and liability whatsoever in connection therewith. Thomas Industries does not warrant, guarantee or assume any obligation or liability in connection with this information.

**Note:** Models pictured are representative of the series and do not represent a specific model number. Consult factory for detailed physical description.



  
**THOMAS**<sup>®</sup>  
PUMPS & COMPRESSORS  
1419 Illinois Avenue, P.O. Box 29  
Sheboygan, WI 53082-0029 USA  
(920) 457-4891 Fax (920) 451-4276  
Internet: <http://www.thomaspumps.com>