

WOB-L® PISTON

Pumps and Compressors

415 Series

MODELS:

Standard models available.

415CDC30/12

Other models based on availability and minimum purchase.

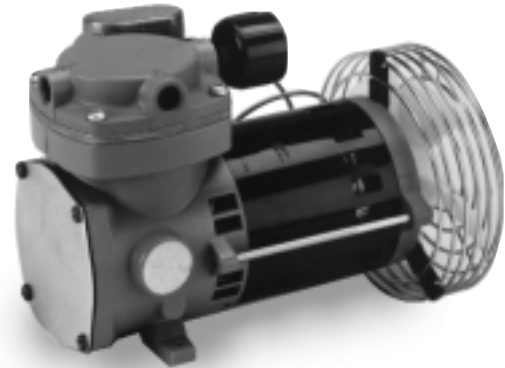
FEATURES (AC & DC):

- Designed for heavy-duty applications
- Oil-less, non-lubricated piston and cylinder
- Permanently lubricated ball bearings
- Stainless steel valves
- Aluminum valve plates
- Lightweight diecast aluminum components
- Long life, high performance piston cup
- Thin wall, hard coated aluminum cylinder for maximum heat transfer
- Balanced for smooth, low vibration operation
- Field service capability
- All wetted aluminum parts treated for corrosion protection from moisture
- All other wetted parts stainless steel
- Intake filter
- CE approval on 220-240/50hz models

Consult factory for custom applications

DIMENSIONS:

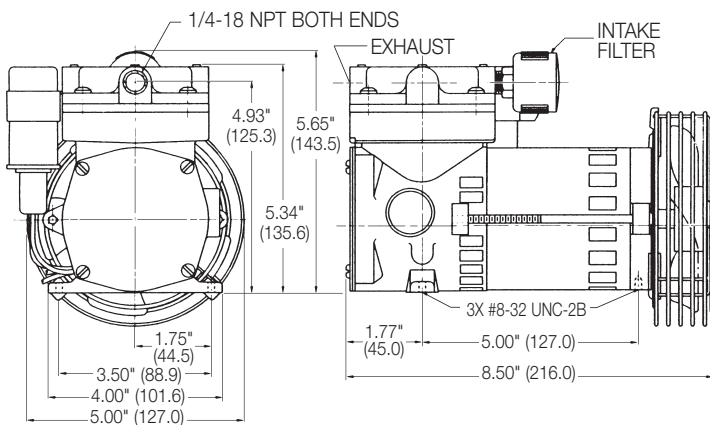
Millimeters are in ()



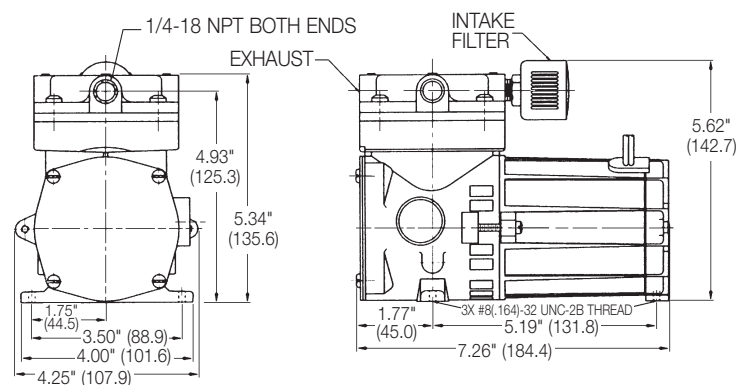
415 CE, CH



415 CDC



415 CE, CH

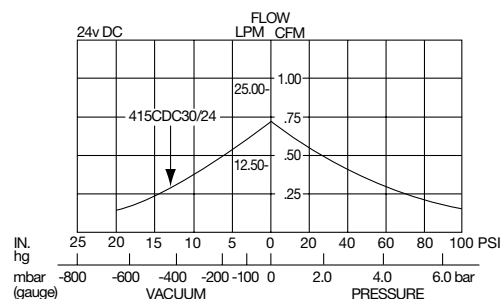
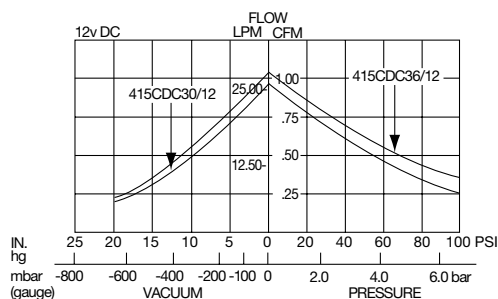
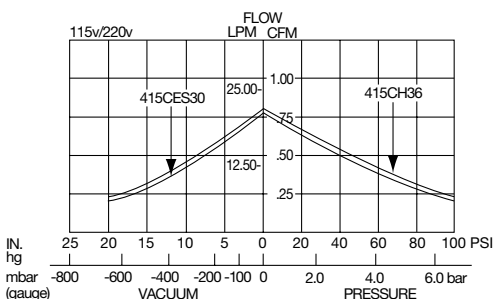


415 CDC



415 SERIES PERFORMANCE DATA:

		STANDARD									
MODEL NUMBER:		415CES30		415CH36		415CDC30/12		415CDC36/12		415CDC30/24	
HEAD CONFIGURATION:		Pressure/Vacuum		Pressure/Vacuum		Pressure/Vacuum		Pressure/Vacuum		Pressure/Vacuum	
STROKE:		.300 Inches		.360 Inches		.300 Inches		.360 Inches		.300 Inches	
PRESSURE:		Flow @ 100v/115v		Flow @ 220v		Flow @ 12v		Flow @ 12v		Flow @ 24v	
CFM @ PSI	LPM @ bar										
PSI	bar	CFM	LPM	CFM	LPM	CFM	LPM	CFM	LPM	CFM	LPM
0	0	.64/.81	18.1/22.9	.87	24.6	.92	26.1	1.07	30.3	.70	19.8
10	.5	.59/.72	17.0/21.0	.71	21.3	.81	23.7	.92	27.2	.59	17.6
20	1.0	.53/.65	15.9/19.4	.64	19.2	.71	21.7	.80	24.5	.50	15.6
30	1.5	.48/.58	14.7/18.0	.57	17.8	.62	19.7	.72	22.2	.43	13.8
40	2.0	.43/.53	13.7/16.6	.53	16.7	.55	18.1	.64	20.6	.37	12.4
50	3.0	.37/.47	11.5/14.4	.45	14.4	.49	15.0	.58	17.5	.33	10.1
60	5.0	.34/.42	8.2/9.7	.41	10.0	.44	10.7	.53	13.0	.30	6.9
70	7.0	.30/.36	3.5/5.4	.36	6.3	.39	6.9	.47	10.4	.25	4.7
80		.27/.30		.32		.34		.43		.22	
90		.23/.25		.27		.30		.39		.20	
100		.19/.20		.23		.25		.37		.17	
MAX. CONTINUOUS PRESSURE:		50 PSI	3.4 bar	50 PSI	3.4 bar	100 PSI	6.9 bar	50 PSI	3.4 bar	100 PSI	6.9 bar
MAX. INTERMITTENT PRESSURE:		100 PSI	6.9 bar	100 PSI	6.9 bar	100 PSI	6.9 bar	100 PSI	6.9 bar	100 PSI	6.9 bar
VACUUM:		Flow @ 100v/115v		Flow @ 220v		Flow @ 12v		Flow @ 12v		Flow @ 24v	
CFM @ IN. hg	LPM @ mbar (gauge)										
IN. hg	mbar (gauge)	CFM	LPM	CFM	LPM	CFM	LPM	CFM	LPM	CFM	LPM
0	0	.67/.81	18.9/22.9	.87	24.6	.92	26.1	1.07	30.3	.70	19.8
5	-100	.51/.59	16.2/19.2	.69	21.6	.75	23.2	.77	25.3	.58	17.8
10	-200	.34/.44	13.5/15.9	.52	18.7	.54	20.2	.57	21.0	.41	15.6
15	-400	.20/.30	8.1/11.0	.36	13.1	.34	13.2	.38	14.2	.24	9.9
20	-600	.16/.18	5.0/6.6	.20	7.7	.20	7.5	.23	8.5	.15	5.4
25	-800		3.7/2.6		2.4		2.8		3.4		2.4
MAX. VACUUM:		26.5" hg	-898 mbar	27.2" hg	-922 mbar	24.6" hg	-833 mbar	25.4" hg	-860 mbar	23.8" hg	-806 mbar
MAX. AMBIENT TEMPERATURE:		104°F	40°C	104°F	40°C	104°F	40°C	104°F	40°C	104°F	40°C
MIN. AMBIENT TEMPERATURE:		50°F	10°C	50°F	10°C	50°F	10°C	50°F	10°C	50°F	10°C
MAX. RESTART PRESSURE:		0 PSI	0 bar	0 PSI	0 bar	100 PSI	6.9 bar	100 PSI	6.9 bar	100 PSI	6.9 bar
MAX. RESTART VACUUM:		0" hg	0 mbar	0" hg	0 mbar	24.6" hg	-833 mbar	25.4" hg	-860 mbar	23.8" hg	-806 mbar
MOTOR VOLTAGE/FREQUENCY:		100/50/60/1-115/60/1		220/50/1		12v DC		12v DC		24v DC	
HORSEPOWER:		1/12		1/12		1/10		1/10		1/10	
MOTOR TYPE:		Permanent Split Capacitor		Permanent Split Capacitor		Permanent Magnet		Permanent Magnet		Permanent Magnet	
CURRENT AT RATED LOAD (AMPS):		1.4/1.3		.6		10.2		12.6		4.2	
POWER AT RATED LOAD (WATTS):		110/140		128							
STARTING CURRENT (LOCKED ROTOR AMPS):		3.88		1.50		42		42		21	
INSULATION CLASS:		B		A		A		A		A	
MIN. FULL LOAD SPEED (RPM):		2800/3400		2800		3846		3328		2532	
THERMAL PROTECTOR:		Yes		Yes		Yes		Yes		Yes	
CAPACITOR VALUE:		4 mfd		7 mfd							
NET WEIGHT:		7 lbs.	3.2 Kg	7 lbs.	3.2 Kg	5 lbs.	2.3 Kg	5 lbs.	2.3 Kg	5 lbs.	2.3 Kg



The information presented in this material is based on technical data and test results of nominal units. It is believed to be accurate and reliable and is offered as an aid to help in the selection of Thomas products. It is the responsibility of the user to determine the suitability of the product for his intended use and the user assumes all risk and liability whatsoever in connection therewith. Thomas Industries does not warrant, guarantee or assume any obligation or liability in connection with this information.

Note: Models pictured are representative of the series and do not represent a specific model number. Consult factory for detailed physical description.

THOMAS
PUMPS & COMPRESSORS

1419 Illinois Avenue, P.O. Box 29
Sheboygan, WI 53082-0029 USA
(920) 457-4891 Fax (920) 451-4276
Internet: <http://www.thomaspumps.com>